



Seattle Pacific University
LIBRARY
Discover, Create, Share

Seattle Pacific University
Digital Commons @ SPU

Publications

Seattle History

1926

A Home in Queen Anne Park

Anonymous

Follow this and additional works at: http://digitalcommons.spu.edu/seattle_history_publications

Recommended Citation

Anonymous, "A Home in Queen Anne Park" (1926). *Publications*. 1.
http://digitalcommons.spu.edu/seattle_history_publications/1

This Book is brought to you for free and open access by the Seattle History at Digital Commons @ SPU. It has been accepted for inclusion in Publications by an authorized administrator of Digital Commons @ SPU.

57
1913

Queen Anne PARK





A Home *in* *Queen Anne Park*

“Home” — how much that word means to all of us!

Signifying as it does all that is best and most pleasant in the life of the American family, it is little wonder that the American nation is so keenly interested in home and its environs.

When you say home, what does that mean to you? Is it merely a place where you spend your leisure time, a rented house, an apartment, a suite of rooms in some residential hotel, or is your idea of a real home one that belongs to you, on land you can call your own?



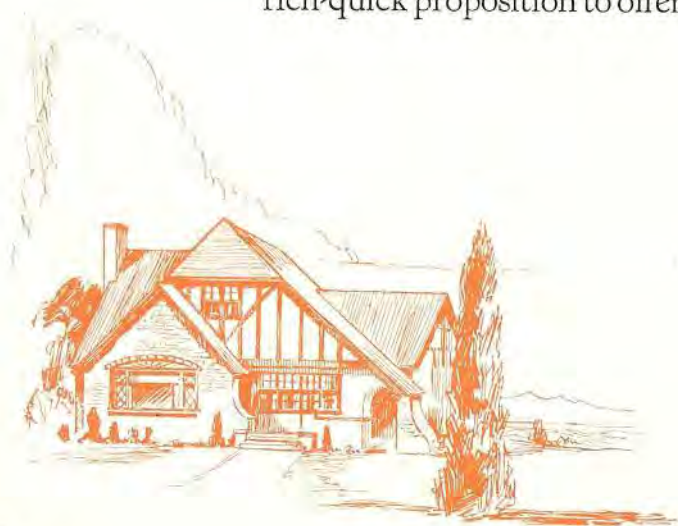
The Plan

In *Queen Anne Park* we offer you all the comforts, advantages and pleasures of a new district in one of Seattle's fine, sightly, residential sections.

When you buy in *Queen Anne Park* you eliminate all problems of home financing and planning; you are placing the financing and building of your home in the hands of capable and substantial people who handle all details.

All we ask of you is: Select the site that appeals, and assist the architect in designing the home embodying the many details experience has taught go to make for comfort and convenience.

Queen Anne Park is not a speculative lot selling subdivision. We do not believe "property values will double over night." We have no get-rich-quick proposition to offer. Rather



do we submit a sane, substantial investment in a home at a fair price. We honestly believe there will be a reasonable increase in values, but only the continued growth and prosperity of Seattle will justify this belief.

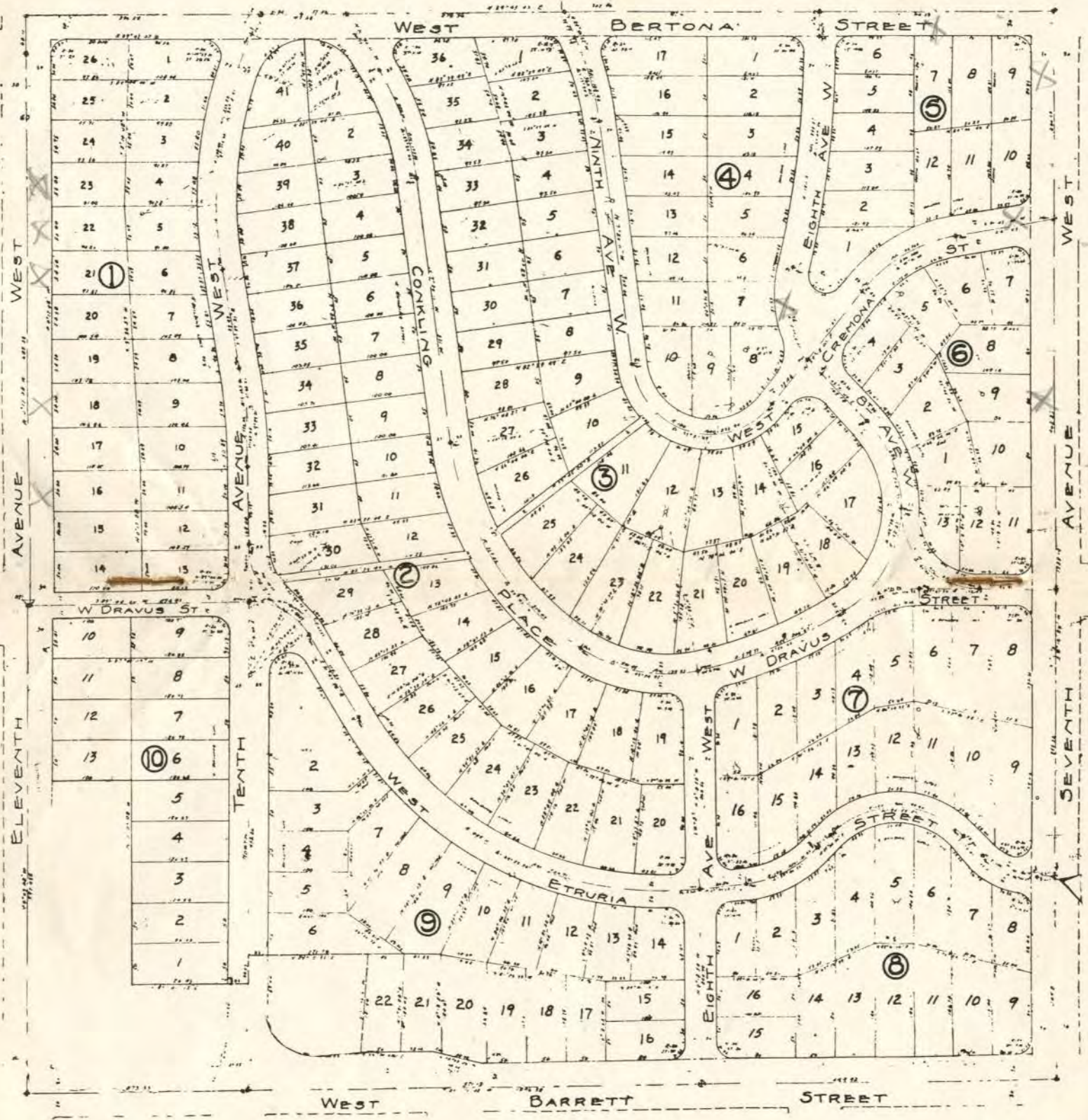
Your home should not be a speculation, however; it should be purchased with the idea of gaining a maximum of comfort and enjoyment therefrom.

The Location

Queen Anne Park is situated in the northwesterly portion of Queen Anne Hill. It covers one of Queen Anne's many sightly locations and affords a view the magnificence of which is seldom equaled. From its highest points one has before him a panorama of beauty from the University of Washington campus on the northeast to the homes of West Seattle on the southwest. Standing in one



Plat of QUEEN ANNE PARK



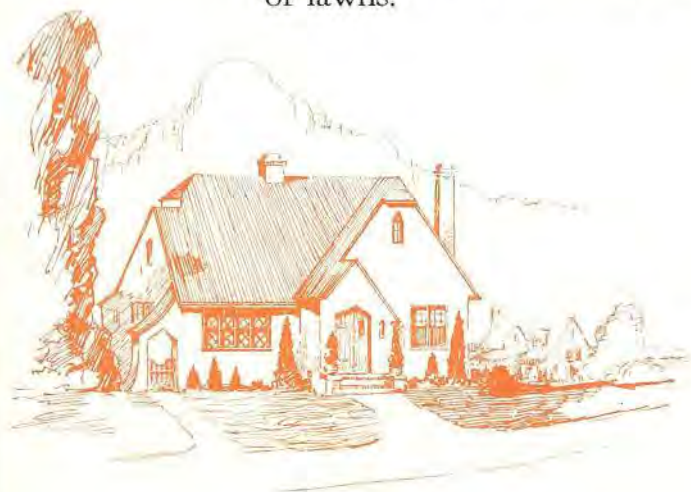
Illustrating the street plan and layout of sites in this delightful section. To reach Queen Anne Park, follow Queen Anne Boulevard to Ninth Avenue and turn north one block to Barrett Street.



spot you have before you the splendid University buildings, Lake Washington, Lake Union, the Government Locks, Magnolia Bluff, Elliott Bay, Alki Point, West Seattle, and an unsurpassed view of the Olympics to the west and the Cascades to the east.

Winding boulevards with all local improvements, paving included, are in and paid for, and there will be no annual payment of local improvement assessments to meet.

A decidedly attractive feature of *Queen Anne Park* is the modern manner in which streets have been handled—all curbs are rounded to eliminate unsightly driveways; all corners are so designed as to afford the maximum driving space and convenience. Sewers, water, and gas have been brought to the property line of each lot; there will be no necessity at any future time to tear up pavement or lawns.



All View Sites

When you study a plat of *Queen Anne Park* it will be observed that every home has a view as a result of this well conceived plan of streets and grading. Lots range in size from 50x100 feet to 70x130 feet. Price is determined by a grouping of three factors—location of the site, size of the property, and type of home you wish to build.

Your home will be built for you, after you select a site, by our architect, who is entirely capable and who takes as much pride in his work as you will in the finished product. In this way *Queen Anne Park* will not be a district of houses all the same in appearance, style and size; rather, it will be a community of homes, the only similarity of which will be in their entire attractiveness and beauty within and without.

In *Queen Anne Park* you have the opportunity to either select a home that is already built and that meets



your requirements, or to have a home built to your own specifications by our architectural department.

At all times we will have open for inspection homes at a varied price range. In the event that you decide to have a home built to order, the homes now constructed will undoubtedly offer you some noteworthy suggestions, which our builders will gladly incorporate in the plan and construction of your house. We are always ready to submit designs which will please you.

Conveniently Located

By reason of its accessibility *Queen Anne Park* combines all the desired features of an exclusive residential section, with the conveniences of a district close to the business center.

The problems of present day traffic congestion during the rush hours at the various bridge heads will lead one to consider the advisability of a home in *Queen Anne Park*. By automobile there are various direct routes, includ-



ing Queen Anne Boulevard, which passes but a block from the district at Ninth Avenue West and Fulton Street—close enough for the convenience of home owners, yet far enough distant to provide quiet for residents of the *Park*. By street car *Queen Anne Park* is accessible thru three different routes. The district itself is free of all street car traffic, yet has ample service within a few blocks. Ten to twenty minutes will carry you from the down town shopping district to *Queen Anne Park* by motor car or street railway.

Schools and churches of various denominations are located within easy reach of *Queen Anne Park*.

When you are in the market for a home, we advise that you discuss home buying and location with your real estate advisor, or one of the realtors of Seattle. They are agents for the sale of homes in this district, and will be pleased to show and recommend—

“A Home in *Queen Anne Park*”

