

March 21st, 2012

Archives in Institutional Context

Michael J. Paulus Jr.
Seattle Pacific University

Follow this and additional works at: <https://digitalcommons.spu.edu/works>

 Part of the [Archival Science Commons](#)

Recommended Citation

Paulus, Michael J. Jr., "Archives in Institutional Context" (2012). *SPU Works*. 9.
<https://digitalcommons.spu.edu/works/9>

This is brought to you for free and open access by Digital Commons @ SPU. It has been accepted for inclusion in SPU Works by an authorized administrator of Digital Commons @ SPU.

Archives in Institutional Context

Michael J. Paulus, Jr., Seattle Pacific University

NWDA-NHPRC Advocacy Forum, Portland, Ore., March 21, 2012



Context

n. ~ 1. The organizational, functional, and operational circumstances surrounding materials' creation, receipt, storage, or use, and its relationship to other materials.*

** SAA's Glossary of Archival
and Records Terminology*



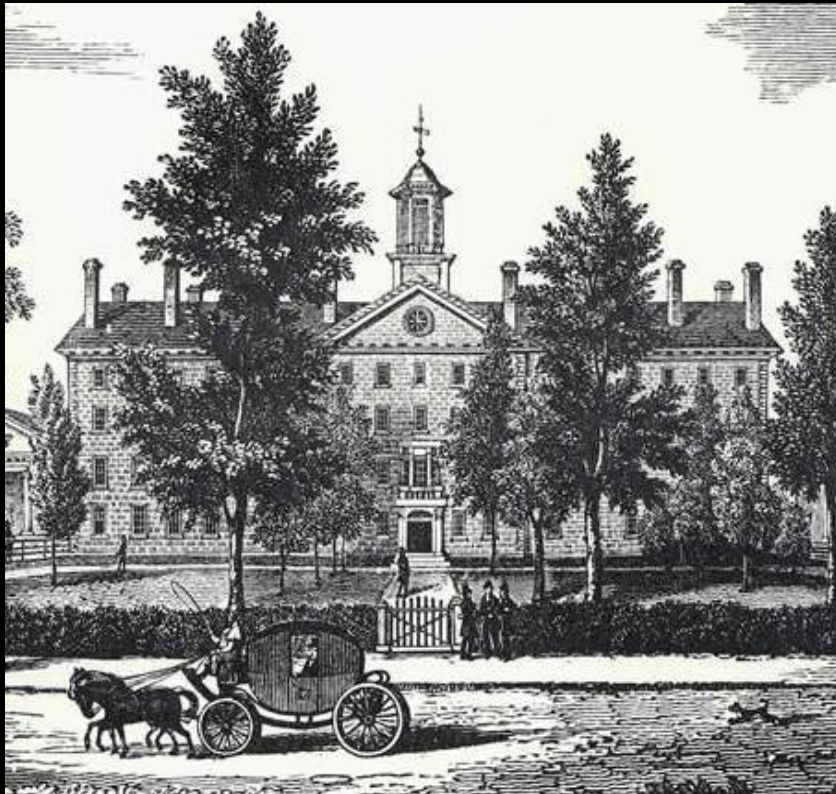
Three Facets of Context

1. Institutional
2. Administrative
3. Library



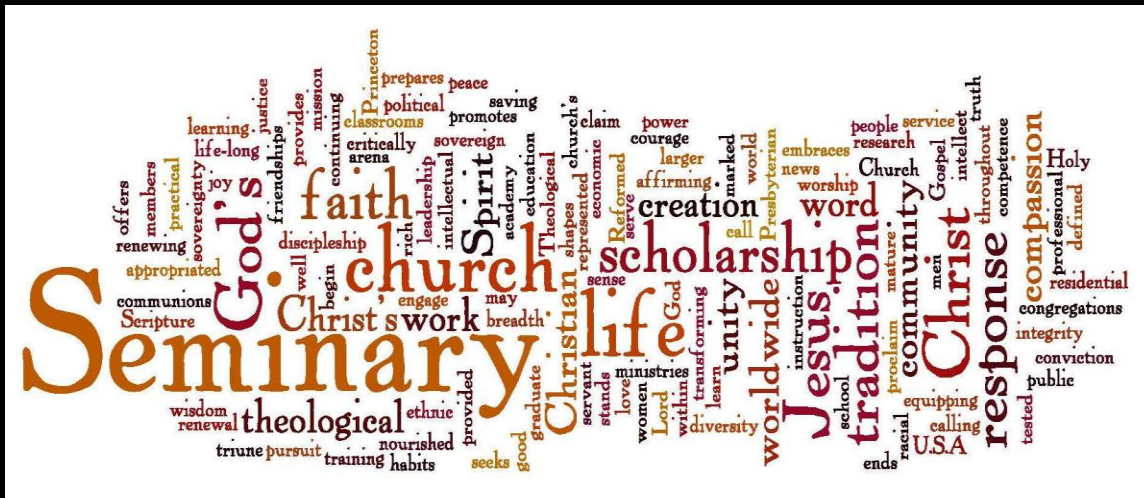
Three Libraries

1. Princeton Theological Seminary
2. Whitman College
3. Seattle Pacific University



Institutional Context

Archives need to be aligned with the core mission of the parent institution.



Curricular Integration

- ▶ Across the curricula
- ▶ In the curricula
- ▶ Curriculum development



Steps toward Integration

- ▶ Across the curricula
- ▶ In the curricula
- ▶ Curriculum development

1. Study
2. Show Off
3. Connect with Faculty
4. Think beyond Content
5. Evolve Show-and-Tell Sessions into Active Learning Classes
6. Suggest Assignments
7. Suggest Courses
8. Collaborate with Library Instruction Program
9. Apply for Teaching and Learning Grants
10. Fund a Curriculum Development Initiative

Administrative Context

Archives as an administrative resource.

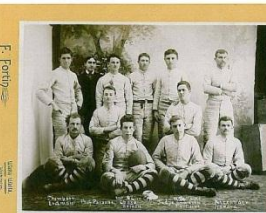


Football reunion set for fall

Intercollegiate football's nearly 80-year history at Whitman came to a close after the 1976 season when the Board of Trustees voted in March of 1977 to cut the sport. Five years later, the February 1982 Whitman magazine reviewed this important moment in the college's history this way: "There are still alumni who regret the demise of football here. Yet many

(Continued on page 10)

Football pants did not provide much padding, but the socks added some for football players of the 1950s.



Michael J. Paulus Jr.

WHITMAN COLLEGE

PUBLISHED BY THE WHITMAN COLLEGE ALUMNI ASSOCIATION
WHITMAN COLLEGE, WALLA WALLA, WA 99362

SUMMER 2008 • NO. 1 • VOL. 29 •

The Whitmans and Whitman

by Michael J. Paulus Jr.
Archivist and Special Collections Librarian

In 1976, Thomas Howells delivered a convocation address at Whitman College titled "An Initiation of Time." In this address Howells, who joined the English faculty at Whitman in 1938, recalled his earliest memories of the college and reflected on its history. "Memory is an initiation of time," Howells said.

"So is history." The best way to check the accuracy of our memories, he said, is to include in our sense of the past the records of history — "the minutes of earlier meetings and the reports of the earlier transactions witnessed and performed by the human race."

(Continued on page 8)

Farm Committee oversees 22,000 acres of farmland

Farm committee at Whitman trace back to the 1930s, when farm meetings came into the college's investment portfolio. The "modern" Whitman Farm Committee took root in 1930, when Whitman President Chester Maxey appointed a group of four local farmers — Henry Copeland, Lester Robison, Ed Tucker and Clarence Bradley — to oversee its farm holdings.

The current all-volunteer group acts as a kind of professional management team for Whitman's extensive farm assets. Members lease all 15 Whitman farm properties twice a year. They decide when to sell crops and who to hire to manage each property. They approve leases (insured by attorney and committee member Jim Harper '72).

"The people on our committee are farmers who know the business inside and out," said Peter Reid '49, assistant to Whitman President George Bridges and overseer of Whitman's farm interests. "They're current on everything from fertilizer rates to weed control. You know, they think a lot like the college does — creatively, innovatively."

The congruence should come as no surprise. Fourteen of the 18 farm committee members are graduates of Whitman. Two of them — Harper and Dave Wyckoff '67 — are also trustees of the college. Wyckoff, who farms in Prosser, is in his second year as committee chair.

The committee oversees a combined 22,000 acres of farmland stretching over four counties: Walla Walla, Umatilla, Garfield and Columbia. "It's been a very dynamic process," said Alex McGregor '71, a history major at Whitman and visiting assistant professor of history 1977-78, who owns McGregor Company, a fertilizer and farm supply firm with 42 outlets in Washington, Idaho and Oregon. "The committee and the college, I think, have been wise in their judgment not to tell people how to farm but rather to choose talented, knowledgeable people and let them make informed decisions."

The core committee works closely with Reid and Treasurer and Chief Financial Officer Peter Harvey '84, ex-officio members of the group, on everything from soil conservation to lease agreements. Most of the 15 leases call for the farm manager to receive 60 percent of the crop and the college to take 40 percent. For drier properties, the split is a 57 percent for the farmer and 33 percent for Whitman. On the low-yield Idaho property, the college receives only 28 percent of the crop, but 61 wild turkeys on the property generated nearly \$100,000 in

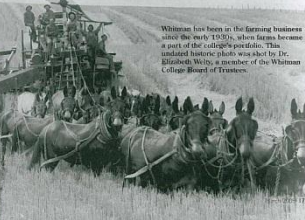
revenue in 2007 and enough electricity to supply a campus the size of Whitman. "It's a harmonious arrangement," McGregor said. "If you find dedicated people who care — and Whitman has a strong record of that in all areas of its operation — strong partnerships occur naturally, and you come to see how valuable they are to the success of everything you do."

Whitman Farm Committee 2007-08

Dave Wyckoff '67 (Chair)
Bob Dunforth
Dennis Davis '66
Jack Froelichson
Jim Harper '72
Drewell Jones '74
Frank Lamb '62
Don Lussalle '58
Alex McGregor '71
Walter Mimsick '64
Marilyn Phillips '52 (emerita)
Anne-Marie Zell Schwerin '85
Mark Vogler '74
Paul Walsh '40
Jerry Zahl

Ex-officio members
George Bridges, president, Whitman College
Peter Harvey '84, treasurer and chief financial officer
Peter Reid '49, assistant to the president

Whitman has been in the farming business since the early 1930s, when farms became a part of the college's portfolio. This undated historical photo was shot by Dr. Elizabeth Weiss, a member of the Whitman College Board of Trustees.



Backward Glance:



Prints from the Whitman College Collection

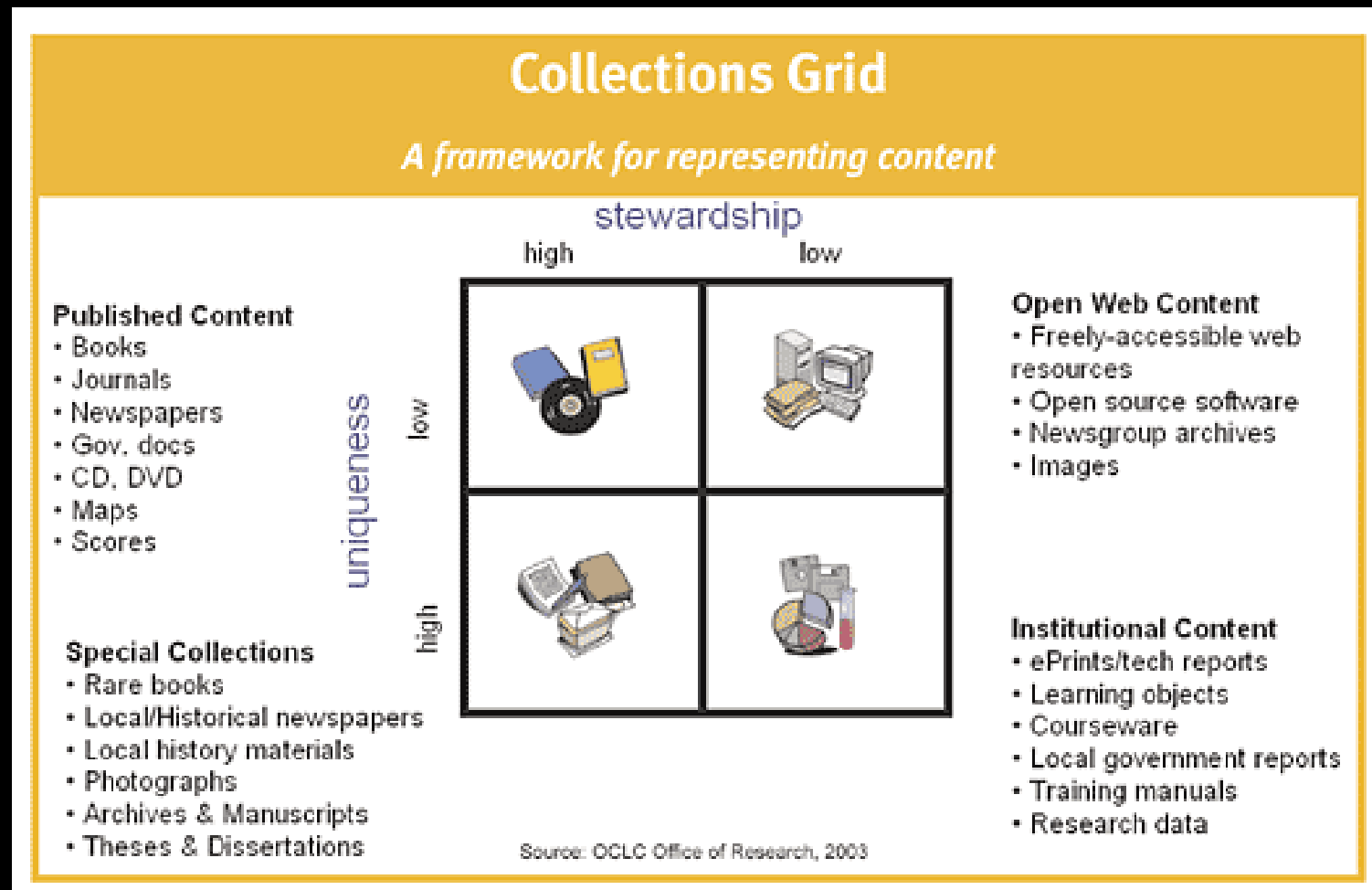
Interpretive Text by Art History/Visual Culture Studies Students,
Class of 2009

Sheehan Gallery, Whitman College, February 2009



The Library

Reconvergence and Integration



The Collections Grid, Lorcan Dempsey and Eric Childress

A Golden Age for Archives



Cover of *Library Journal*, November 1, 2005