

What Could Go Wrong? AI Tools in the Classroom – a Live Experiment

SPU Day of Common Learning, Jan 24th 2024

SPU Day of Common Learning, Jan 24th 2024

Carrie Fry, Sciences Librarian; Instructor

Grace Seo, Associate Director Educational Technology and Media; Instructor

R. John Robertson, Assistant Dean for Instructional Design and Emerging Technologies;
Assistant Professor

Land Acknowledgement

Seattle Pacific University is named for a city that takes its name from Chief Si'ahl, the chief of the Duwamish people, whose territory and traditional land stretched across our campus. We respectfully acknowledge, with gratitude, that we are gathering today on the lands, both ceded and unceded, of the Coast Salish peoples, the land which touches the shared waters of all tribes and bands within the Suquamish, Tulalip, and Muckleshoot nations — people who are still here today.



Overview



- LibGuide:
<https://spu.libguides.DoCLAtools>
with Links –
- What we're doing in this session:
 - Brief introduction
 - Text Generation:
 - We do – demo ChatGPT
 - You do – try out Perplexity and Bard
 - Other AI generation & Wrap-Up

Generative AI and Large Language Models

LLMs are AI systems that have been trained to...generate human-like text. They are called "large" because they are trained on vast amounts of data and have an enormous number of parameters - think of parameters as akin to the knobs or settings on the machine - which allow them to generate highly nuanced and contextually accurate responses.

Given the prompt "Once upon a time," an LLM might continue with "there was a king who ruled a vast kingdom," because it has learned from its training data that stories often start this way. The more data the model is trained on, the better it becomes at generating relevant and coherent text.

But it is not actually reasoning, merely predicting, which means it can generate significant errors in both fact and logic.

Description from:
<https://www.godaddy.com/resources/skills/guide-to-large-language-models>

Information Qualities



Credible



Reliable



Trustworthy

Epistemic Trust

- Trust in another as a source of information
- Trust a non-expert places in an expert (and we are all non-experts in most things)

Source: Hosier, A., & Adams A. (2023).

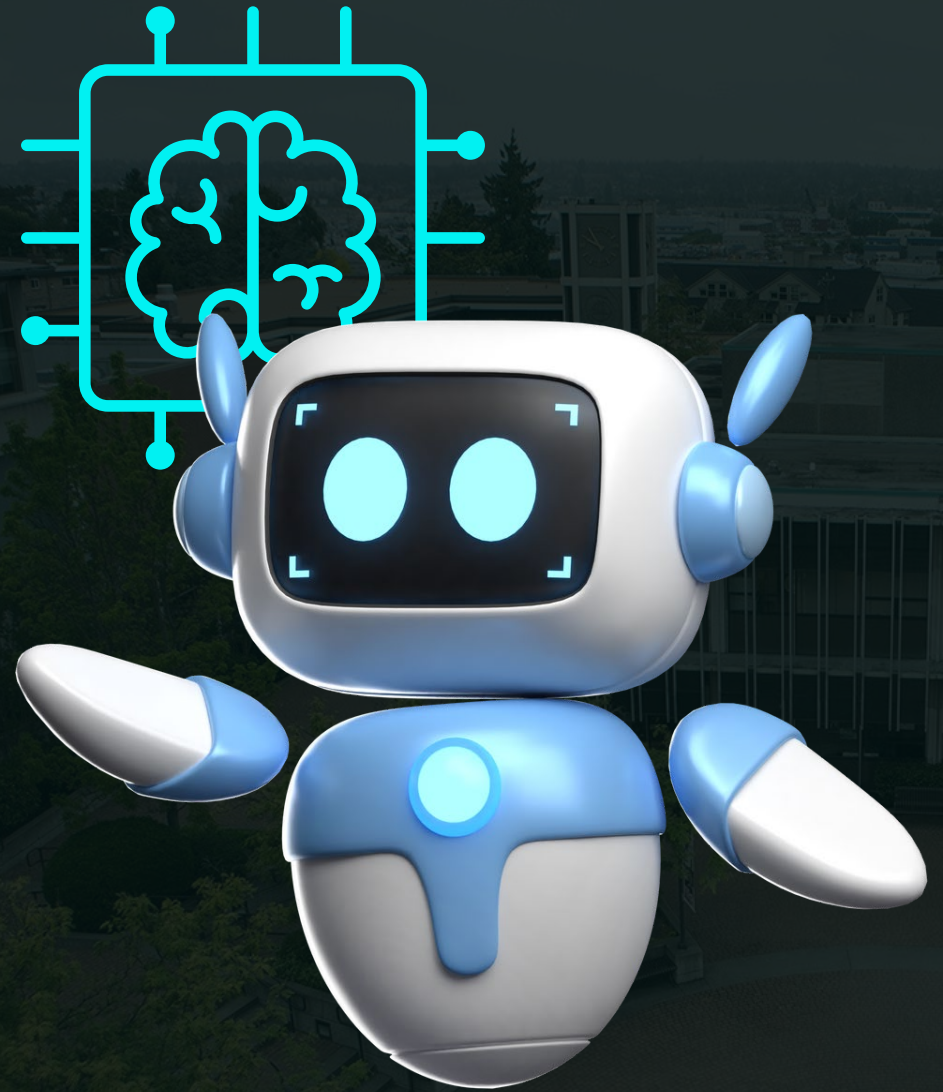
Werewolves at the door:

Disinformation mitigation theory and practice.

<https://www.youtube.com/watch?v=SfX4fug8HOU>

First, we need some questions

- Quick temperature of the room? - have you used and what? (Show of hands)
- Now forget about AI:
 - What topic(s) do you know well? What are you an expert about? (from Batman to deep neural networks to Patagonia)
 - (or) What are you working on?



GPT led exploration

- Let's look at one or two of these together in ChatGPT before you start working on this in pairs
- 3.5
- 4.0



Bard and Perplexity free play

- Libguide:
<https://spu.libguides.com/docAItools>
- Note: Perplexity is free and Bard requires Google Sign-in
- Can use ChatGPT or other tool if you already have an account
- Expert/Non-Expert pairs
- Look at the questions and topics



Some things to try as you chat with the AI tool (a non exhaustive list)

- Enter question about a topic where one is an expert
- Consider if it seems credible, reliable, trustworthy.
- Are you judging the results intuitively or analytically, what raises questions?
- Ask the tool follow up questions?
 - How did this help in understanding
- How did you judge as an expert?
- How did you judge as a non-expert?
- Explore another tool, how did the answers vary?
- Did you notice any bias in the responses?
- Bonus: try a more current topic

Reporting back



Equity and AI

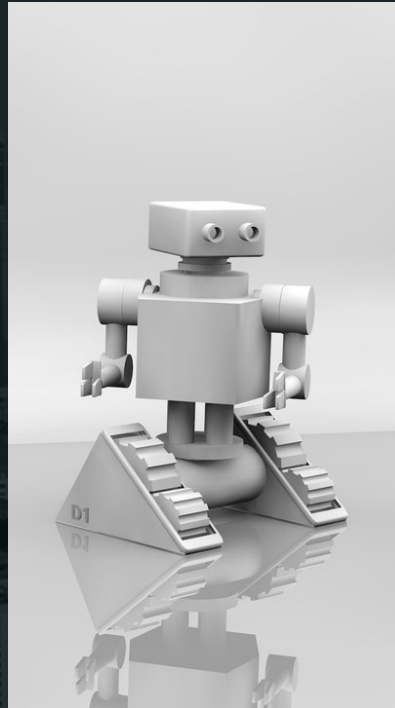
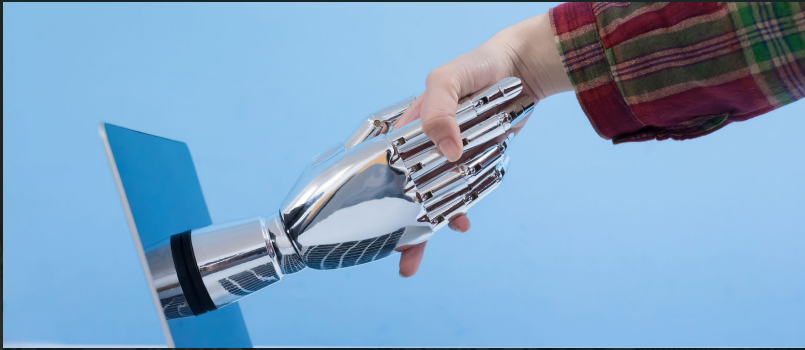
Let's go back to our definition...

- there was a king
- a vast kingdom
- from: GoDaddy

But as a source, it's not neutral

- A queen? (gender)
- A republic? (political)
- I don't like big game hunting (identity politics)

If we want to think carefully about our definition, how much more should we be thinking carefully about AI tools and data sets



Other Generative Tools

Firefly and Dalle

Image Generation
Prompt I & Prompt II

ResearchRabbit

Citation Mapping



Wrapping Up

Last thoughts? Questions?

Contact Us



Carrie Fry,
cfry@spu.edu



Grace Seo,
graceseo@spu.edu



R. John Robertson,
rjr@spu.edu



Photo Credits

SPU-themed Background from
University Communications

Clipart Images from Stock Images